

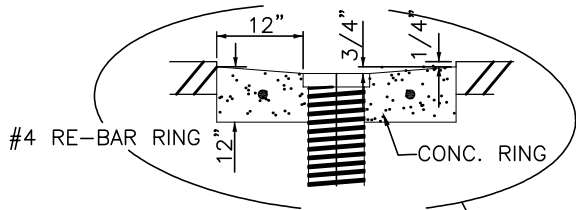
HOOPER IRRIGATION COMPANY

PRESSURE IRRIGATION STANDARDS AND SPECIFICATIONS

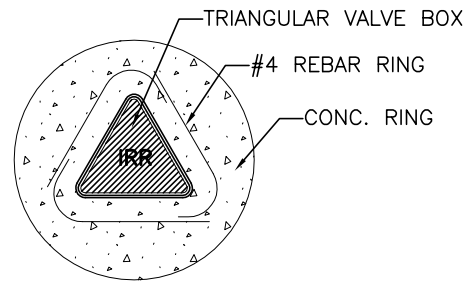
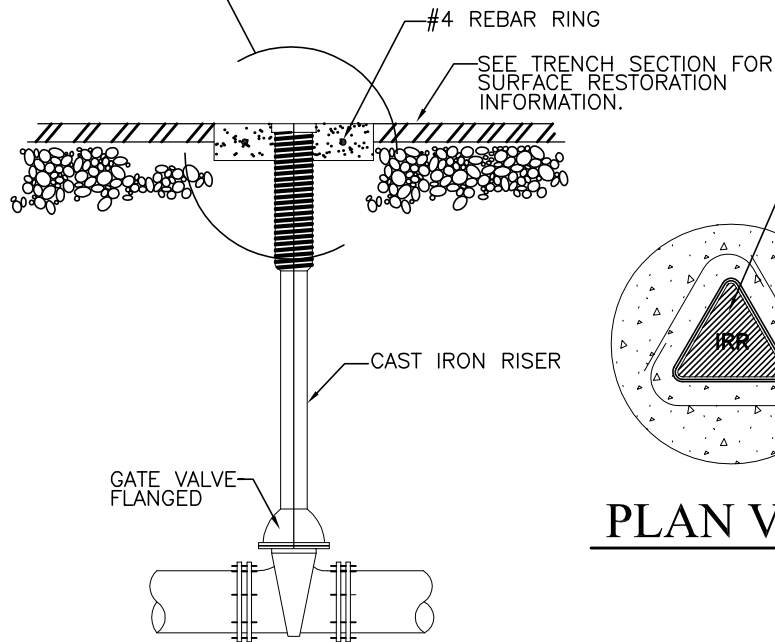
JULY 2003
REVISED 2014, 2018



J·U·B ENGINEERS, INC.



NOTE: LID FOR SECONDARY WATER TO BE D&L SUPPLY M-9009, (OR EQUAL) STAMPED "IRR" OR "IRRIGATION"



PLAN VIEW

VALVE BOX CONCRETE COLLAR DETAIL

N.T.S.

REUSE OF DRAWINGS

THIS DOCUMENT, AND THE IDEAS AND DESIGNS INCORPORATED HEREIN AS INSTRUMENT OF PROFESSIONAL SERVICE, IS THE PROPERTY OF J-U-B ENGINEERS, INC. AND IS NOT TO BE USED, IN WHOLE OR PART, FOR ANY OTHER PROJECT WITHOUT THE EXPRESS WRITTEN AUTHORIZATION OF J-U-B ENGINEERS, INC.

REVISION

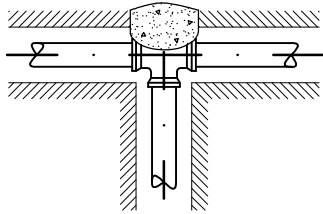
NO.	DESCRIPTION	BY	APR.	DATE



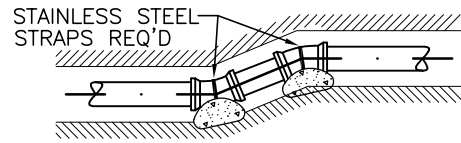
Hooper Irrigation Company
Pressure Irrigation Standards

VALVE BOX CONCRETE COLLAR

SHEET	PI-2
CAD DWG:	detail01.dwg
PLOT SCALE:	N/A
DATE:	MAY 2003
DRAWN BY:	D.STEELE
DESIGN BY:	D.STEELE
CHECKED BY:	TLA
SCALE:	-

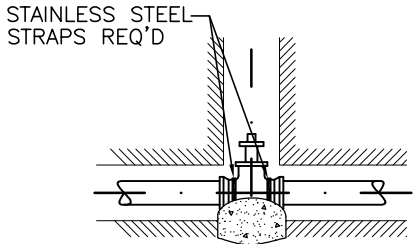


TEE



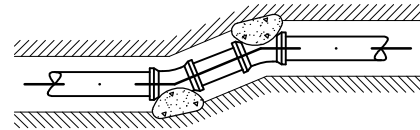
STAINLESS STEEL STRAPS REQ'D

VERTICAL APPLICATION
45°, 22 1/2°, OR
11 1/4° BEND

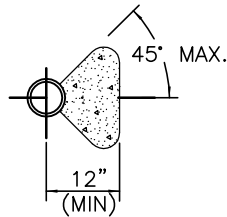


STAINLESS STEEL STRAPS REQ'D

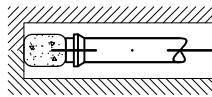
VALVE ANCHORS REQ'D
FOR VALVES 12" OR LARGER



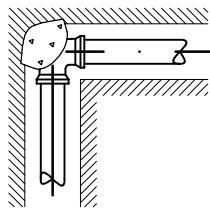
HORIZONTAL APPLICATION
45°, 22 1/2°, OR
11 1/4° BEND



TYPICAL SECTION
THRU THRUST BLOCK



DEAD END



90° BEND

DIMENSION TABLE

THRUST BLOCK BEARING AREA IN SQ. FT. (SEE CONDITIONS BELOW)			
PIPE SIZE	CONDITION		
	90° BEND	OTHER BENDS	VALVES, TEES, DEAD ENDS
4	1.8	1.0	1.3
6	4.0	2.2	2.8
8	7.1	3.8	5.0
10	11.1	6.0	7.9
12	16.0	8.7	11.3
14	21.8	11.8	15.4
16	28.4	15.4	20.1
18	36.0	19.5	25.4
20	44.4	24.0	31.4
24	64.0	34.6	45.2
27	81.0	43.8	57.3
30	100.0	54.1	70.7
42	195.9	106.0	138.5
48	255.9	138.5	181.0

CONDITIONS:

LINE PRESSURE – 120 PSI
 SOIL BEARING CAPACITY – 1500 PSF

NOTE: ALL FITTINGS SHALL BE WRAPPED WITH 12 MIL POLYETHYLENE PRIOR TO POURING THE CONCRETE THRUST BLOCK.

THRUST BLOCKING

N.T.S.

REUSE OF DRAWINGS

THIS DOCUMENT, AND THE IDEAS AND DESIGNS INCORPORATED HEREIN AS INSTRUMENT OF PROFESSIONAL SERVICE, IS THE PROPERTY OF J-U-B ENGINEERS, INC. AND IS NOT TO BE USED, IN WHOLE OR PART, FOR ANY OTHER PROJECT WITHOUT THE EXPRESS WRITTEN AUTHORIZATION OF J-U-B ENGINEERS, INC.

REVISION

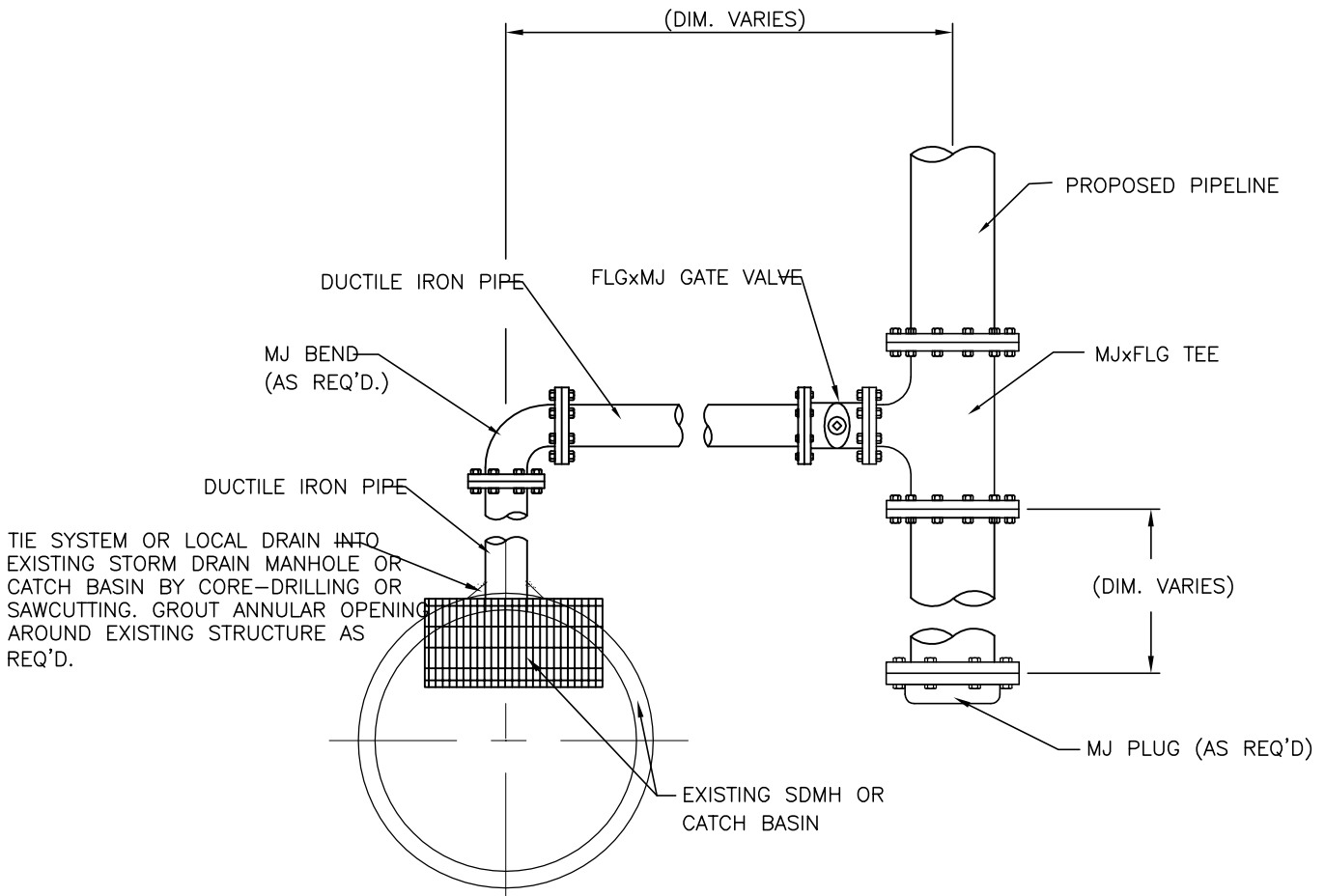
NO.	DESCRIPTION	BY	APR.	DATE



Hooper Irrigation Company
Pressure Irrigation Standards

THRUST BLOCKING DETAILS

SHEET	PI-3
CAD DWG:	detail01.dwg
PLOT SCALE:	N/A
DATE:	MAY 2003
DRAWN BY:	D.STEELE
DESIGN BY:	D.STEELE
CHECKED BY:	TLA
SCALE:	-



NOTE:
 DRAIN SIZE TO BE APPROVED
 BY COMPANY ENGINEER.

LOCAL / SYSTEM DRAIN DETAIL

N.T.S.

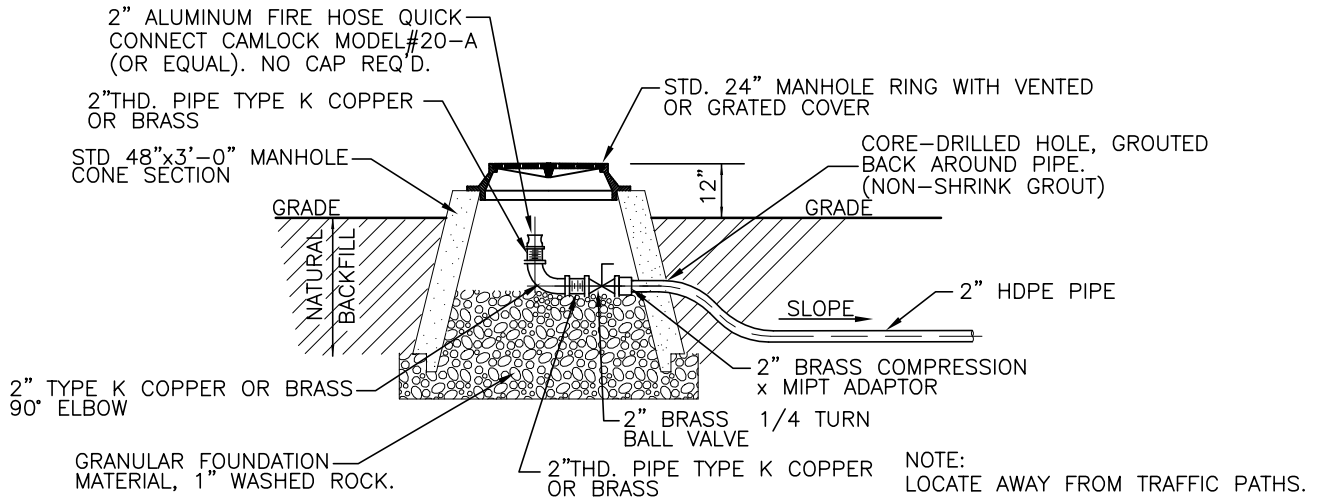
REUSE OF DRAWINGS			
THIS DOCUMENT, AND THE IDEAS AND DESIGNS INCORPORATED HEREIN AS INSTRUMENT OF PROFESSIONAL SERVICE, IS THE PROPERTY OF J-U-B ENGINEERS, INC. AND IS NOT TO BE USED, IN WHOLE OR PART, FOR ANY OTHER PROJECT WITHOUT THE EXPRESS WRITTEN AUTHORIZATION OF J-U-B ENGINEERS, INC.			
REVISION			
△			
△			
△			
NO.	DESCRIPTION	BY	APR., DATE



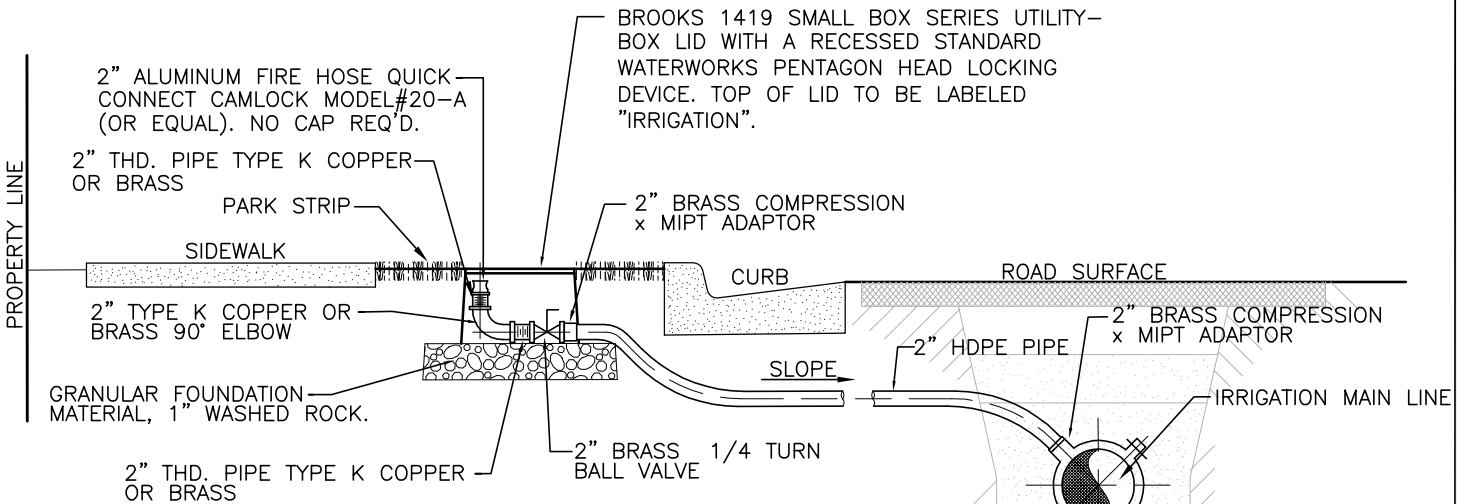
Hooper Irrigation Company
Pressure Irrigation Standards

LOCAL/SYSTEM DRAIN DETAIL

SHEET	PI-4
CAD DWG:	detail01.dwg
PLOT SCALE:	N/A
DATE:	MAY 2003
DRAWN BY:	D.STEELE
DESIGN BY:	D.STEELE
CHECKED BY:	TLA
SCALE:	-



NO CURB & GUTTER



SIDEWALK, CURB & GUTTER

- CONNECTION TO C900 PVC MAIN (4" THRU 10")
 - 2" SERVICE SADDLE, MUELLER BOLTED
 - 2 PC. BRONZE SERIES #H-13490
 - OR FORD BOLTED #S-90
- 2" CONNECTION TO DUCTILE IRON MAIN (12" & LARGER)
 - 2" SERVICE SADDLE REQ'D., DOUBLE STRAP
 - BRONZE MUELLER SERIES #BR2B
 - OR BRASS FORD #202B

NOTE:
STAINLESS STEEL PIPE STIFFENERS
ARE REQUIRED TO BE USED ON ALL
CONNECTIONS ON POLY PIPE.

AIR INLET & REMOVAL FACILITY

N.T.S.

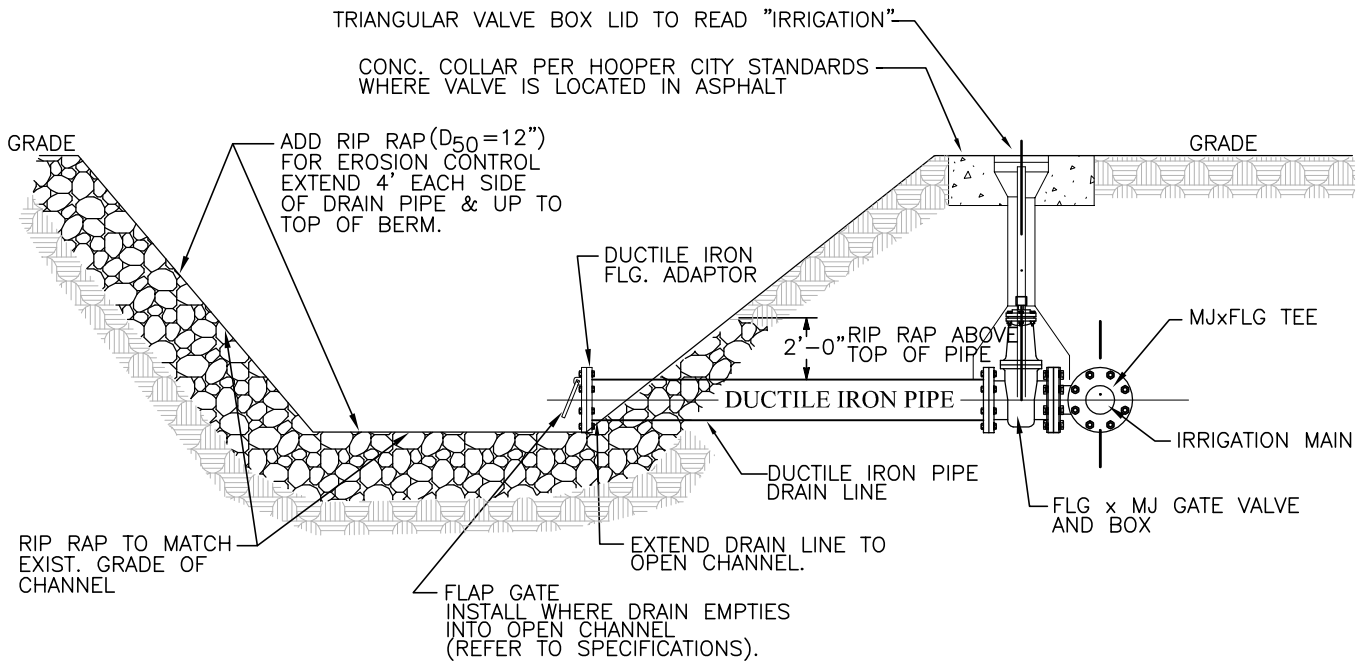
REUSE OF DRAWINGS			
THIS DOCUMENT, AND THE IDEAS AND DESIGNS INCORPORATED HEREIN AS INSTRUMENT OF PROFESSIONAL SERVICE, IS THE PROPERTY OF J-U-B ENGINEERS, INC. AND IS NOT TO BE USED, IN WHOLE OR PART, FOR ANY OTHER PROJECT WITHOUT THE EXPRESS WRITTEN AUTHORIZATION OF J-U-B ENGINEERS, INC.			
REVISION			
NO.	DESCRIPTION	BY	APR. DATE



Hooper Irrigation Company
Pressure Irrigation Standards

AIR INLET & REMOVAL FACILITY

SHEET	PI-5
CAD DWG:	detail01.dwg
PLOT SCALE:	N/A
DATE:	MAY 2003
DRAWN BY:	D.STEELE
DESIGN BY:	D.STEELE
CHECKED BY:	TLA
SCALE:	-



NOTE:
DRAIN SIZE TO BE APPROVED
BY COMPANY ENGINEER.

OPEN CHANNEL DRAIN

N.T.S.

REUSE OF DRAWINGS

THIS DOCUMENT, AND THE IDEAS AND DESIGNS INCORPORATED HEREIN AS INSTRUMENT OF PROFESSIONAL SERVICE, IS THE PROPERTY OF J-U-B ENGINEERS, INC. AND IS NOT TO BE USED, IN WHOLE OR PART, FOR ANY OTHER PROJECT WITHOUT THE EXPRESS WRITTEN AUTHORIZATION OF J-U-B ENGINEERS, INC.

REVISION

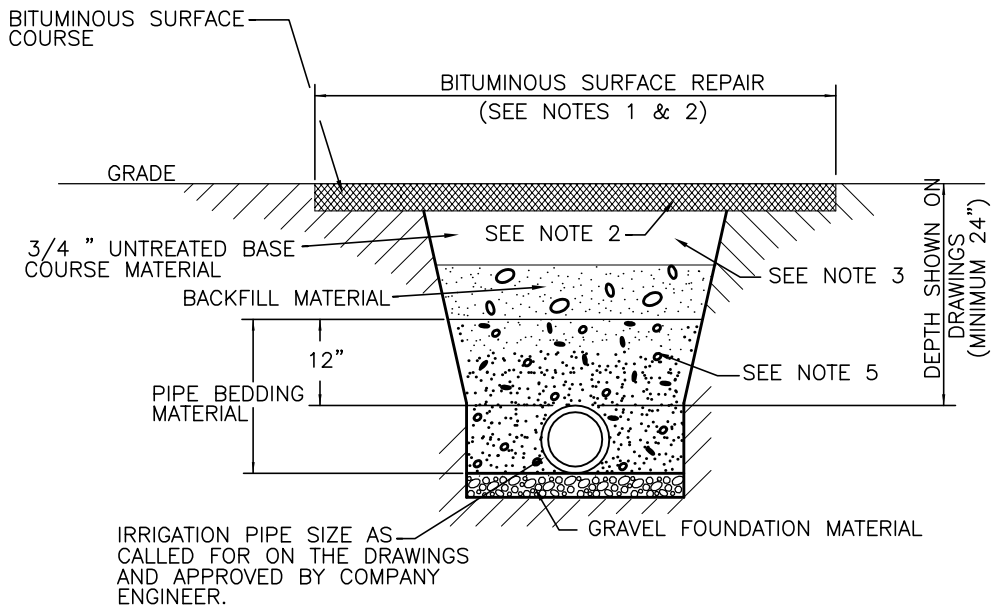
NO.	DESCRIPTION	BY	APR.	DATE



**Hooper Irrigation Company
Pressure Irrigation Standards**

OPEN CHANNEL DRAIN

SHEET	PI-6
CAD DWG:	detail01.dwg
PLOT SCALE:	N/A
DATE:	MAY 2003
DRAWN BY:	D.STEELE
DESIGN BY:	D.STEELE
CHECKED BY:	TLA
SCALE:	-



NOTES:

1. SAW CUT BITUMINOUS ASPHALT SURFACE 0.5' WIDER THAN TRENCH ON EACH SIDE FOR FINAL TRENCH REPAIR WHERE BITUMINOUS SURFACE EXISTS.
2. BITUMINOUS SURFACE IS TO BE 6" OR TO MATCH EXISTING THICKNESS, WHICHEVER IS GREATER FOR STATE ROADS & 4" FOR ALL OTHER ROADS.
3. 3/4" UNTREATED BASE COURSE MATERIAL IS TO BE 12" OR TO MATCH EXISTING THICKNESS, WHICHEVER IS GREATER.
4. SLOPE TRENCH SIDES TO MEET OSHA SAFETY REQUIREMENTS, (LATEST REV.)
5. SEE SPECIFICATIONS FOR GRADATION & COMPACTION REQUIREMENTS.
6. REFER TO U.D.O.T. STANDARDS FOR TRENCH SECTION DETAIL.

BITUMINOUS SURFACE TRENCH SECTION

N.T.S.

REUSE OF DRAWINGS

THIS DOCUMENT, AND THE IDEAS AND DESIGNS INCORPORATED HEREIN AS INSTRUMENT OF PROFESSIONAL SERVICE, IS THE PROPERTY OF J-U-B ENGINEERS, INC. AND IS NOT TO BE USED, IN WHOLE OR PART, FOR ANY OTHER PROJECT WITHOUT THE EXPRESS WRITTEN AUTHORIZATION OF J-U-B ENGINEERS, INC.

REVISION

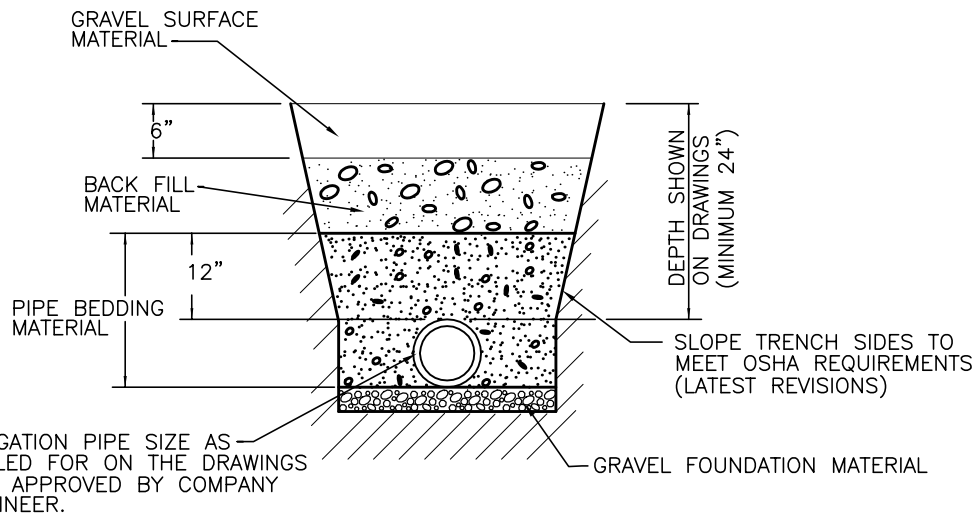
NO.	DESCRIPTION	BY	APR.	DATE



**Hooper Irrigation Company
Pressure Irrigation Standards**

**BITUMINOUS SURFACE
TRENCH SECTION**

SHEET	PI-7
CAD DWG:	detail01.dwg
PLOT SCALE:	N/A
DATE:	MAY 2003
DRAWN BY:	D.STEELE
DESIGN BY:	D.STEELE
CHECKED BY:	TLA
SCALE:	-



NOTES:
SEE SPECIFICATIONS FOR GRADATION
& COMPACTION REQUIREMENTS.

GRAVEL SURFACE TRENCH SECTION

N.T.S.

REUSE OF DRAWINGS

THIS DOCUMENT, AND THE IDEAS AND DESIGNS INCORPORATED HEREIN AS INSTRUMENT OF PROFESSIONAL SERVICE, IS THE PROPERTY OF J-U-B ENGINEERS, INC. AND IS NOT TO BE USED, IN WHOLE OR PART, FOR ANY OTHER PROJECT WITHOUT THE EXPRESS WRITTEN AUTHORIZATION OF J-U-B ENGINEERS, INC.

REVISION

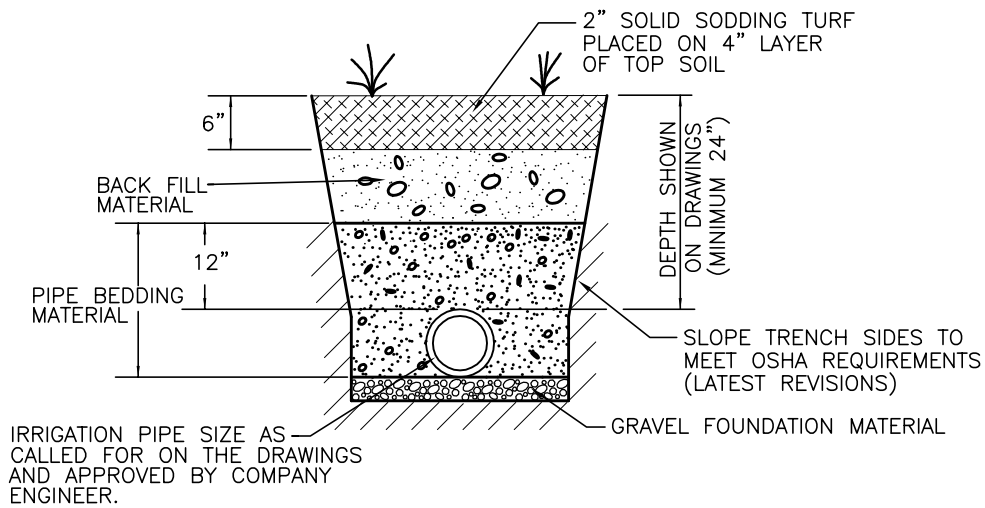
NO.	DESCRIPTION	BY	APR.	DATE



**Hooper Irrigation Company
Pressure Irrigation Standards**

GRAVEL SURFACE
TRENCH SECTION

SHEET	PI-8
CAD DWG:	detail01.dwg
PLOT SCALE:	N/A
DATE:	MAY 2003
DRAWN BY:	D.STEELE
DESIGN BY:	D.STEELE
CHECKED BY:	TLA
SCALE:	-



NOTES:
SEE SPECIFICATIONS FOR GRADATION
& COMPACTION REQUIREMENTS.

TURF SURFACE TRENCH SECTION

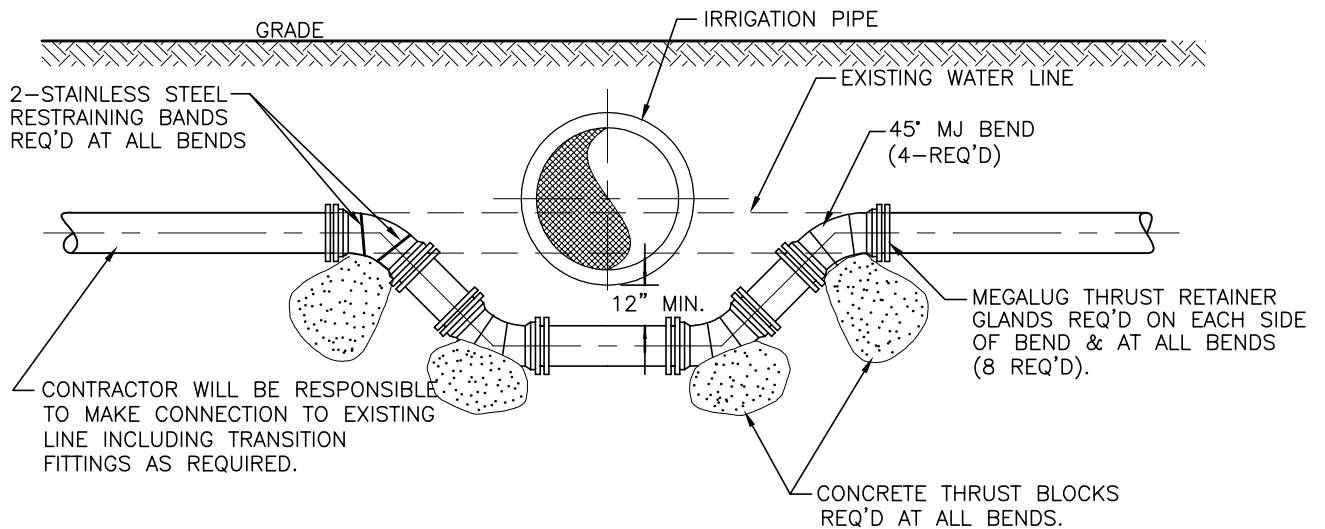
N.T.S.

REUSE OF DRAWINGS			
THIS DOCUMENT, AND THE IDEAS AND DESIGNS INCORPORATED HEREIN AS INSTRUMENT OF PROFESSIONAL SERVICE, IS THE PROPERTY OF J-U-B ENGINEERS, INC. AND IS NOT TO BE USED, IN WHOLE OR PART, FOR ANY OTHER PROJECT WITHOUT THE EXPRESS WRITTEN AUTHORIZATION OF J-U-B ENGINEERS, INC.			
REVISION			
NO.	DESCRIPTION	BY	APR. DATE



Hooper Irrigation Company
Pressure Irrigation Standards
 TURF SURFACE
 TRENCH SECTION

SHEET	PI-9
CAD DWG:	detail01.dwg
PLOT SCALE:	N/A
DATE:	MAY 2003
DRAWN BY:	D.STEELE
DESIGN BY:	D.STEELE
CHECKED BY:	TLA
SCALE:	-



NOTES:

BEFORE RELOCATING AN EXISTING WATERLINE THE CONTRACTOR SHALL NOTIFY ALL AFFECTED BUSINESSES AND RESIDENTS 24 HOURS BEFORE CONSTRUCTION. THE CONTRACTOR MUST DEMONSTRATE TO THE CITY THAT ALL OF THE MATERIALS ARE ON HAND THAT MAY BE NEEDED BEFORE RELOCATING ANY WATERLINES. RELOCATION OF WATERLINES WILL NOT BE STARTED AFTER 10:00 A.M. THE CITY SHALL OPERATE ALL MAINLINE WATER VALVES AND THE CONTRACTOR MUST CONTACT THE CITY IF SERVICE IS REQUIRED.

WATER LINE RELOCATION DETAIL

N.T.S.

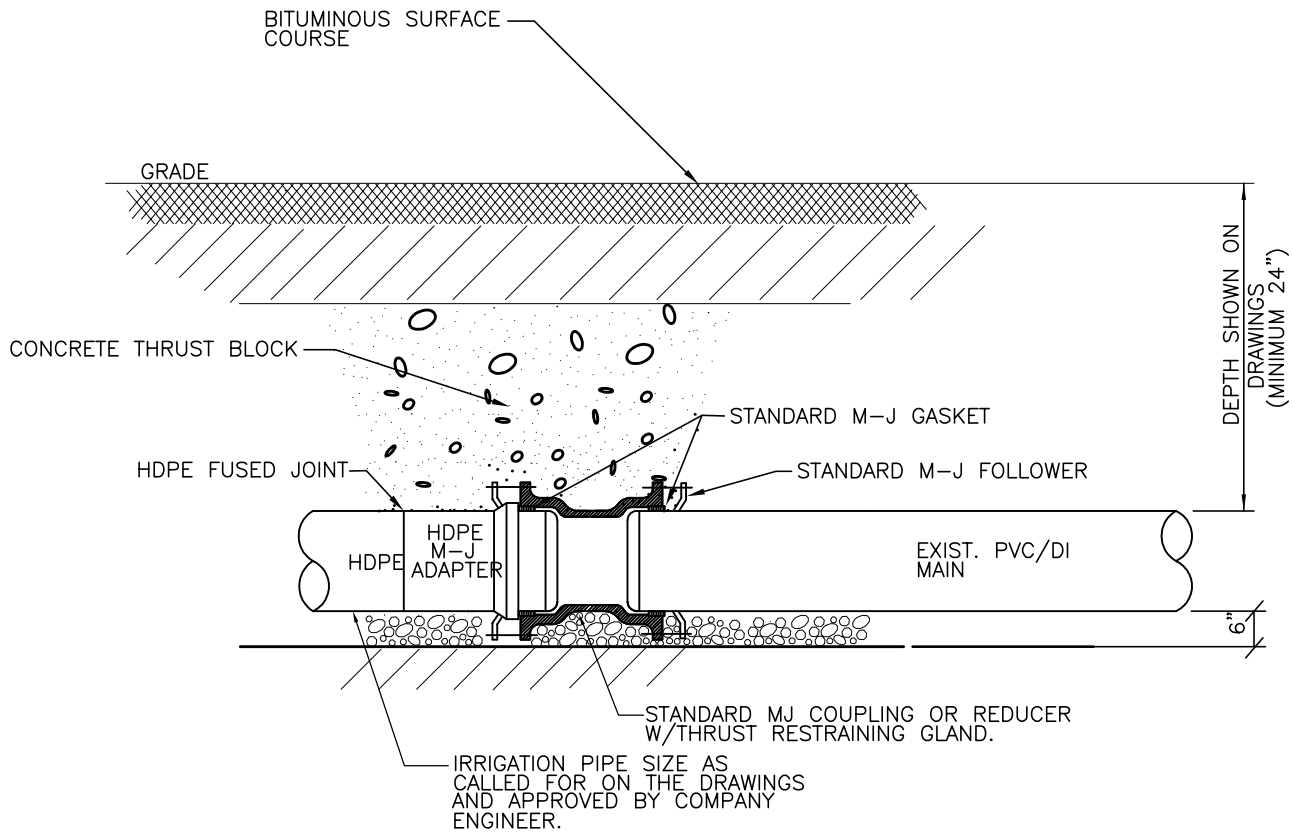
REUSE OF DRAWINGS			
THIS DOCUMENT, AND THE IDEAS AND DESIGNS INCORPORATED HEREIN AS INSTRUMENT OF PROFESSIONAL SERVICE, IS THE PROPERTY OF J-U-B ENGINEERS, INC. AND IS NOT TO BE USED, IN WHOLE OR PART, FOR ANY OTHER PROJECT WITHOUT THE EXPRESS WRITTEN AUTHORIZATION OF J-U-B ENGINEERS, INC.			
REVISION			
△			
△			
△			
△			
NO.	DESCRIPTION	BY	APR. DATE



**Hooper Irrigation Company
Pressure Irrigation Standards**

**WATERLINE
RELOCATION DETAIL**

SHEET	PI-12
CAD DWG:	detail01.dwg
PLOT SCALE:	N/A
DATE:	MAY 2003
DRAWN BY:	D.STEELE
DESIGN BY:	D.STEELE
CHECKED BY:	TLA
SCALE:	-



NOTE:

1. REFER TO SHEET # PI-7, 8 & 9 TRENCH DETAILS FOR "BEDDING MATERIAL ETC..."

2. ALL FITTINGS SHALL BE WRAPPED WITH 12 MIL POLYETHYLENE PRIOR TO POURING THE CONCRETE THRUST BLOCK.

HDPE CONNECTION DETAIL

N.T.S.

REUSE OF DRAWINGS

THIS DOCUMENT, AND THE IDEAS AND DESIGNS INCORPORATED HEREIN AS INSTRUMENT OF PROFESSIONAL SERVICE, IS THE PROPERTY OF J-U-B ENGINEERS, INC. AND IS NOT TO BE USED, IN WHOLE OR PART, FOR ANY OTHER PROJECT WITHOUT THE EXPRESS WRITTEN AUTHORIZATION OF J-U-B ENGINEERS, INC.

REVISION

NO.	DESCRIPTION	BY	APR.	DATE

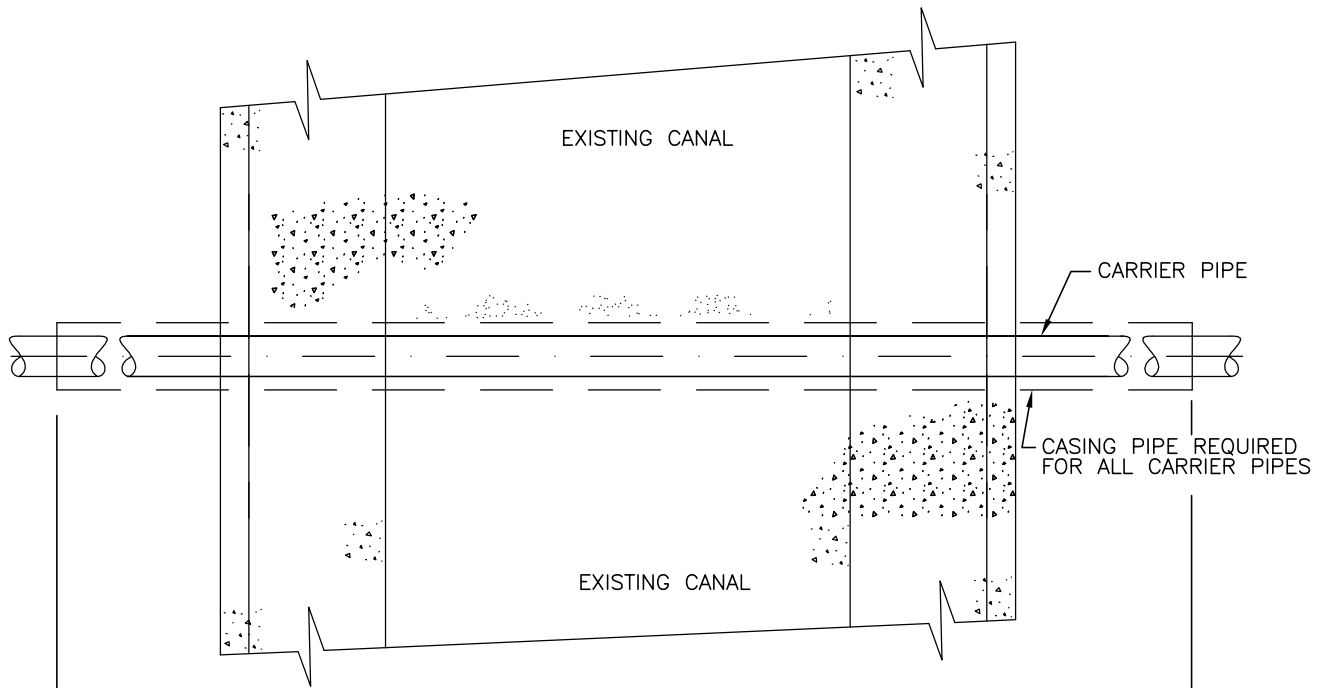


**Hooper Irrigation Company
Pressure Irrigation Standards**

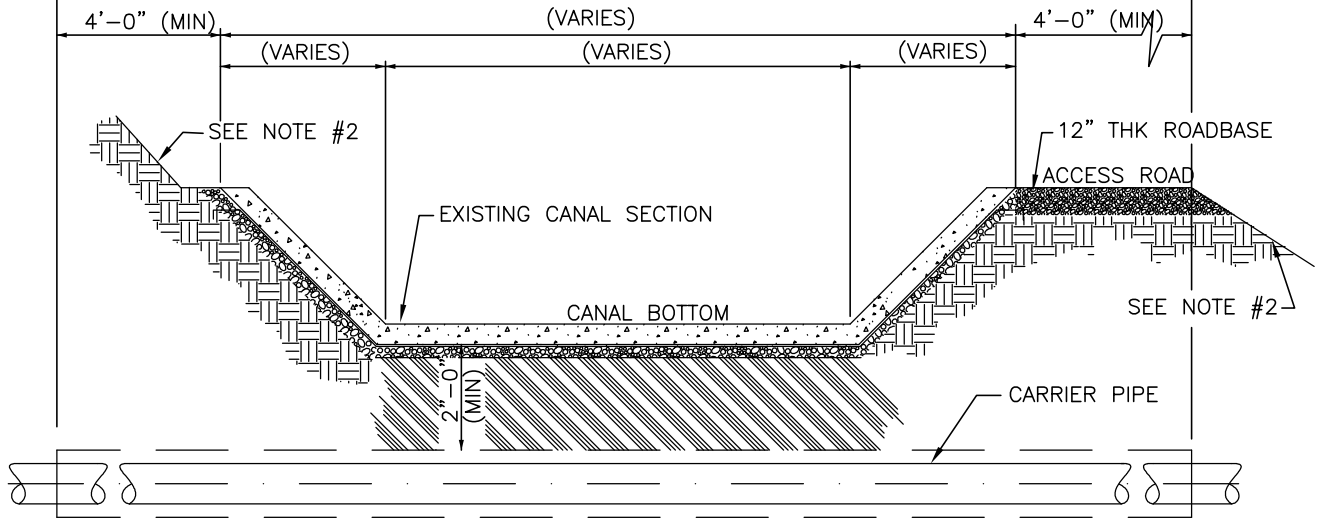
**HDPE
CONNECTION DETAIL**

SHEET **PI-13**

CAD DWG:	detail01.dwg
PLOT SCALE:	N/A
DATE:	MAY 2003
DRAWN BY:	D.STEELE
DESIGN BY:	D.STEELE
CHECKED BY:	TLA
SCALE:	-



PLAN VIEW



**OPEN CONCRETE-LINED CHANNEL
ELEVATION VIEW**

CASING PIPE: SIZE IS TO BE DETERMINED BASED ON CARRIER PIPE.
MAT'L. TYPE: STEEL WELDED PIPE CASING (SEE DETAIL PI-17)

NOTES:

- 1) BEFORE CROSSING THE CANAL WITH A UTILITY THE CONTRACTOR SHALL OBTAIN WRITTEN AUTHORIZATION FROM HOOPER IRRIGATION COMPANY. THE CONTRACTOR MUST DEMONSTRATE TO HOOPER IRRIGATION COMPANY THAT ALL OF THE MATERIALS ARE ON HAND THAT MAY BE NEEDED BEFORE STARTING CONSTRUCTION ON IRRIGATION COMPANY PROPERTY OR EASEMENTS.
- 2) CONTRACTOR SHALL BE RESPONSIBLE FOR TOTAL RESTORATION OF THE CONSTRUCTION AREA, INCLUDING REVEGETATION & RESTORATION OF ACCESS ROADWAY

TYPICAL CANAL CROSSING

N.T.S.

REUSE OF DRAWINGS

THIS DOCUMENT, AND THE IDEAS AND DESIGNS INCORPORATED HEREIN AS INSTRUMENT OF PROFESSIONAL SERVICE, IS THE PROPERTY OF J-U-B ENGINEERS, INC. AND IS NOT TO BE USED, IN WHOLE OR PART, FOR ANY OTHER PROJECT WITHOUT THE EXPRESS WRITTEN AUTHORIZATION OF J-U-B ENGINEERS, INC.

REVISION

NO.	DESCRIPTION	BY	APR.	DATE

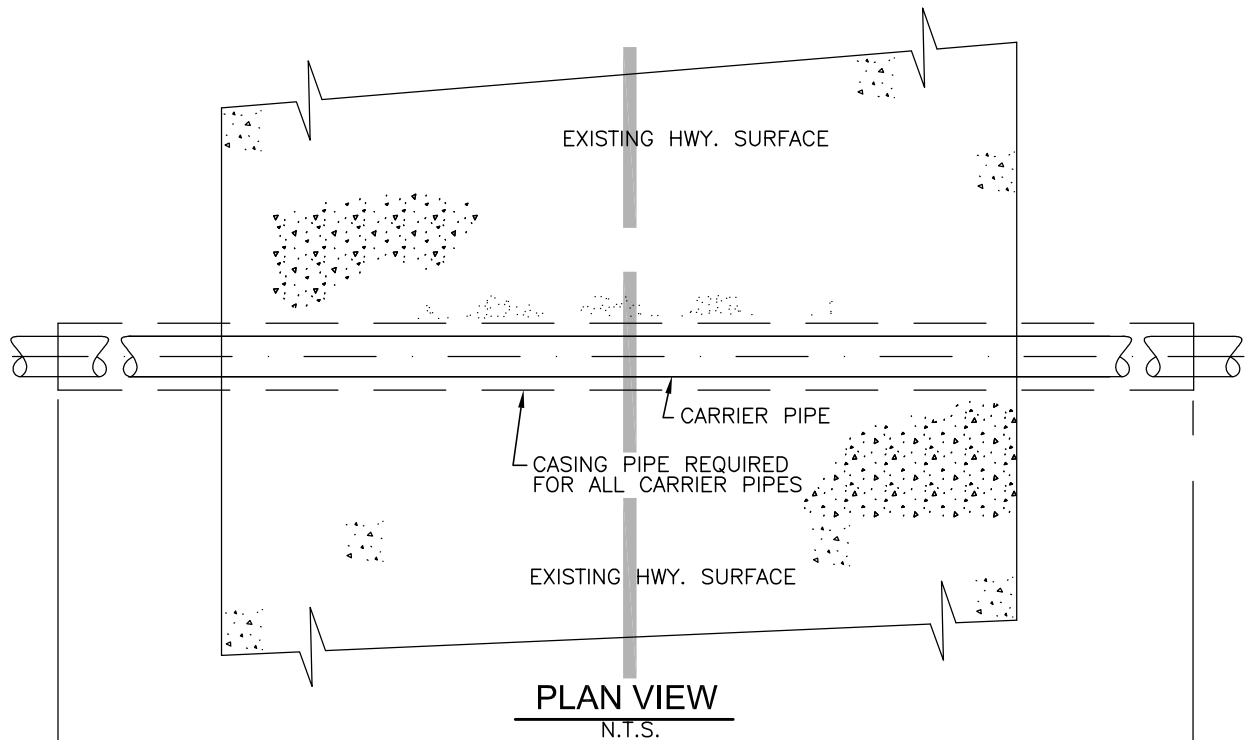


**Hooper Irrigation Company
Pressure Irrigation Standards**

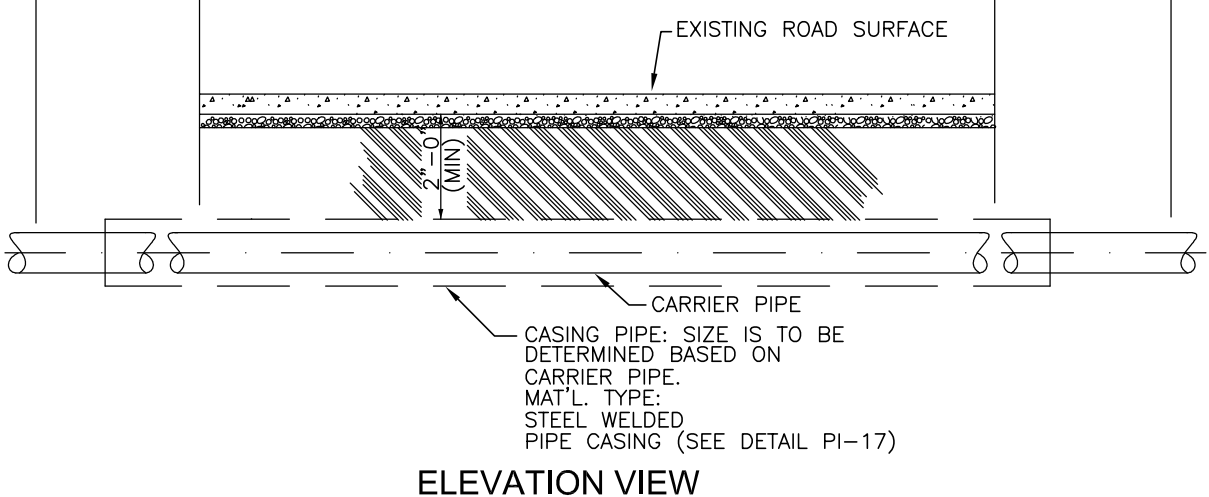
**TYPICAL CANAL
CROSSING DETAIL**

SHEET **PI-14**

CAD DWG:	detail01.dwg
PLOT SCALE:	N/A
DATE:	JUNE 2003
DRAWN BY:	D.STEELE
DESIGN BY:	D.STEELE
CHECKED BY:	TLA
SCALE:	-



4'-0" (MIN) (ROAD WIDTH VARIES) 4'-0" (MIN)



CARRIER PIPE
 CASING PIPE: SIZE IS TO BE DETERMINED BASED ON CARRIER PIPE.
 MAT'L. TYPE: STEEL WELDED PIPE CASING (SEE DETAIL PI-17)

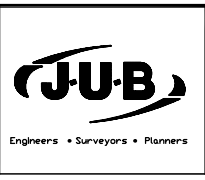
NOTES:

- 1) WORK TO BE PERFORMED WITHIN UDOT RIGHT-OF-WAYS SHALL BE DONE IN ACCORDANCE WITH DIVISION 19 OF SPECIFICATIONS.
- 2) CONTRACTOR SHALL BE RESPONSIBLE FOR TOTAL RESTORATION OF THE CONSTRUCTION AREA, INCLUDING REVEGETATION & RESTORATION OF ACCESS ROADWAY

TYPICAL UDOT HWY. CROSSING
 N.T.S.

REUSE OF DRAWINGS
 THIS DOCUMENT, AND THE IDEAS AND DESIGNS INCORPORATED HEREIN AS INSTRUMENT OF PROFESSIONAL SERVICE, IS THE PROPERTY OF J-U-B ENGINEERS, INC. AND IS NOT TO BE USED, IN WHOLE OR PART, FOR ANY OTHER PROJECT WITHOUT THE EXPRESS WRITTEN AUTHORIZATION OF J-U-B ENGINEERS, INC.

REVISION			
△			
△			
△			
NO.	DESCRIPTION	BY	APR. DATE



Hooper Irrigation Company
Pressure Irrigation Standards
 TYPICAL UDOT HWY.
 CROSSING DETAIL

SHEET	PI-15
CAD DWG:	detail01.dwg
PLOT SCALE:	N/A
DATE:	JUNE 2003
DRAWN BY:	D.STEELE
DESIGN BY:	D.STEELE
CHECKED BY:	TLA
SCALE:	-

NO.	DESCRIPTION	BY	APR.	DATE

REVISION

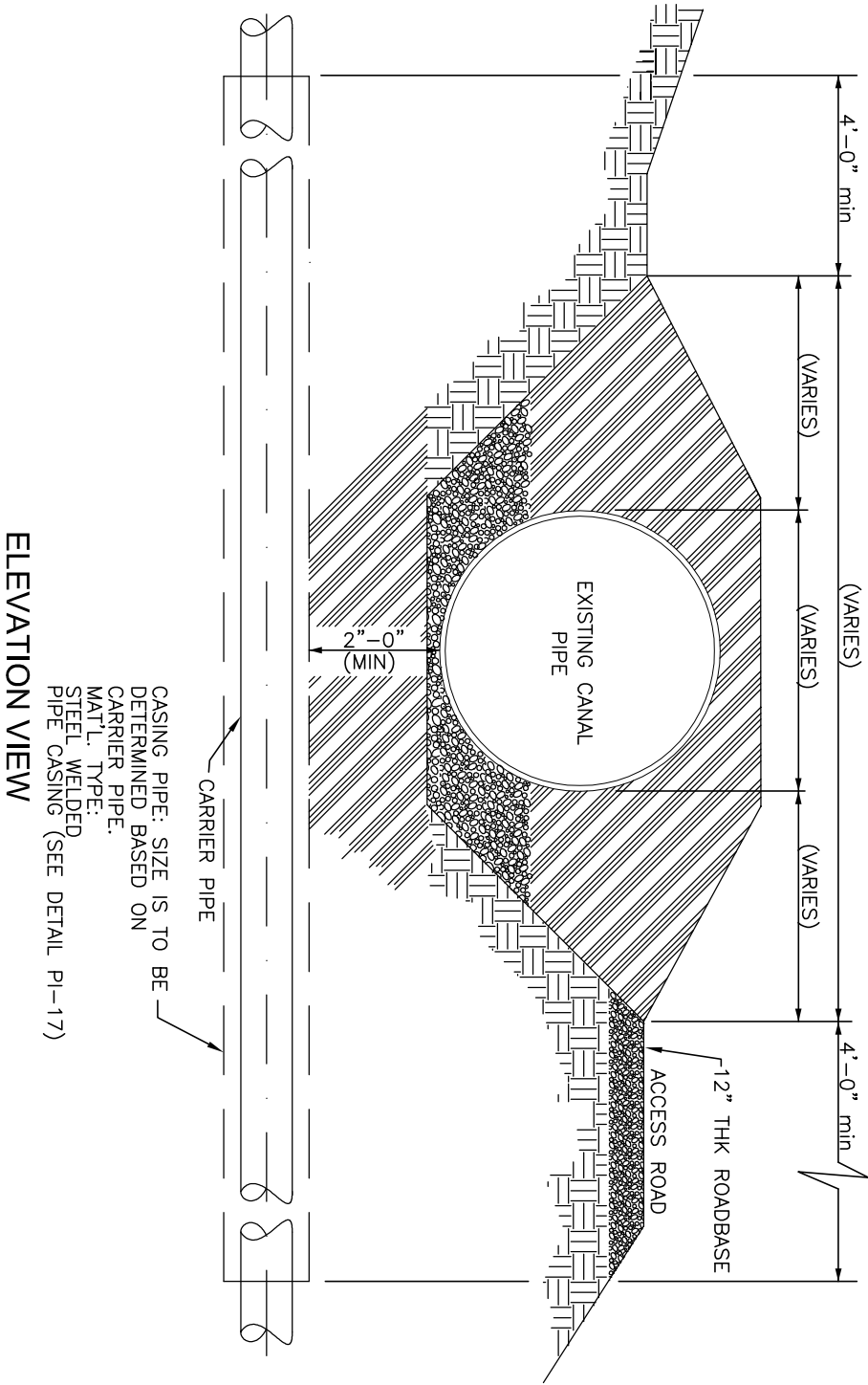
AUTHORIZATION OF J-U-B ENGINEERS, INC. FOR ANY OTHER PROJECT WITHOUT THE EXPRESS WRITTEN AS INSTRUMENT OF PROFESSIONAL SERVICE, IS THE PROPERTY OF J-U-B ENGINEERS, INC. AND IS NOT TO BE USED, IN WHOLE OR PART, IN ANY OTHER PROJECT WITHOUT THE EXPRESS WRITTEN AUTHORIZATION OF J-U-B ENGINEERS, INC.

THIS DOCUMENT, AND THE IDEAS AND DESIGNS INCORPORATED HEREIN REUSE OF DRAWINGS



Hooper Irrigation Company
 Pressure Irrigation Standards
 TYPICAL PIPED CANAL
 CROSSING DETAIL

SHEET
 P1-16
 CAD DWG: detail01.dwg
 PLOT SCALE: N/A
 DATE: JUNE 2003
 DRAWN BY: D.STEELE
 DESIGN BY: D.STEELE
 CHECKED BY: TLA
 SCALE: -



CARRIER PIPE
 CASING PIPE: SIZE IS TO BE DETERMINED BASED ON CARRIER PIPE.
 MAT'L. TYPE: STEEL WELDED PIPE CASING (SEE DETAIL P1-17)

ELEVATION VIEW

TYPICAL PIPED CANAL CROSSING

N.T.S.

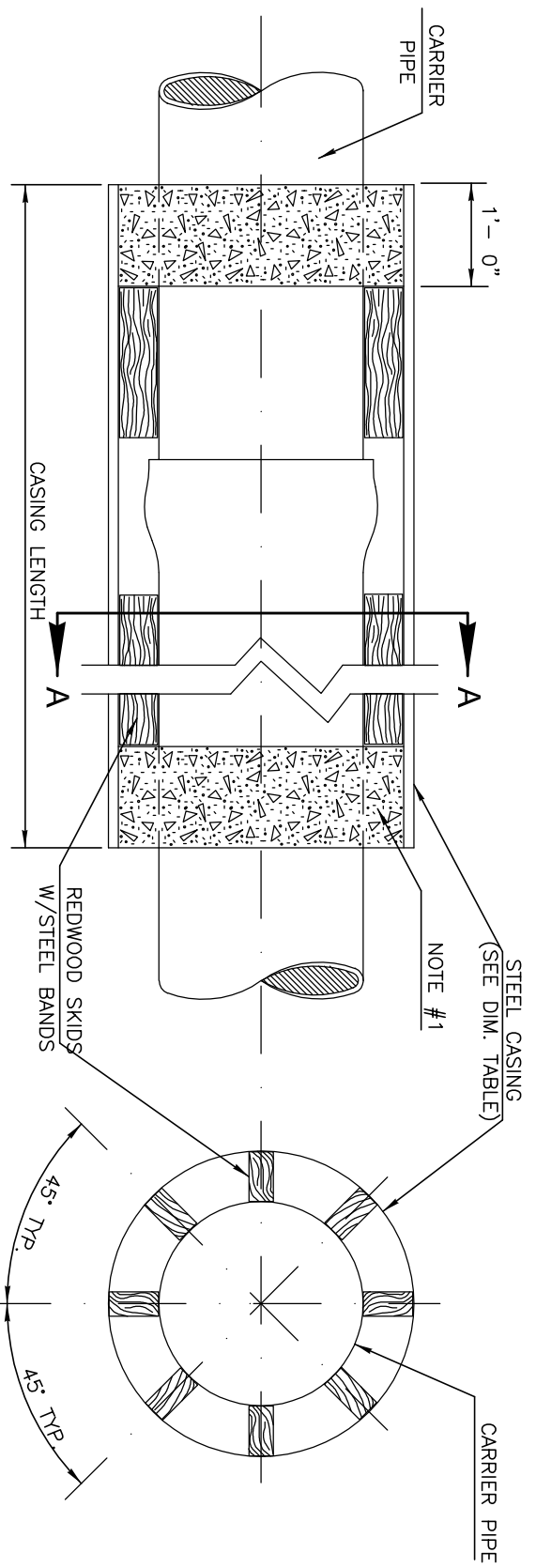
NO.	DESCRIPTION	BY	APR.	DATE



Hooper Irrigation Company
Pressure Irrigation Standards
TYPICAL PIPE CASING
DETAIL

SHEET	PI-17
CAD DWG:	detail01.dwg
PLOT SCALE:	N/A
DATE:	JUNE 2003
DRAWN BY:	D.STEELE
DESIGN BY:	DETAILS
CHECKED BY:	TLA
SCALE:	—

REUSE OF DRAWINGS
 THIS DOCUMENT, AND THE IDEAS AND DESIGNS INCORPORATED HEREIN
 AS INSTRUMENT OF PROFESSIONAL SERVICE, IS THE PROPERTY OF
 J-U-B ENGINEERS, INC. AND IS NOT TO BE USED, IN WHOLE OR PART,
 FOR ANY OTHER PROJECT WITHOUT THE EXPRESS WRITTEN
 AUTHORIZATION OF J-U-B ENGINEERS, INC.



- NOTES:
1. ANNULAR SPACE AT ENDS OF STEEL CASING SHALL BE CONCRETE GROUTED.
 2. STEEL PIPE TO HAVE A MINIMUM YIELD STRENGTH OF 42,000 PSI.

DIMENSION TABLE

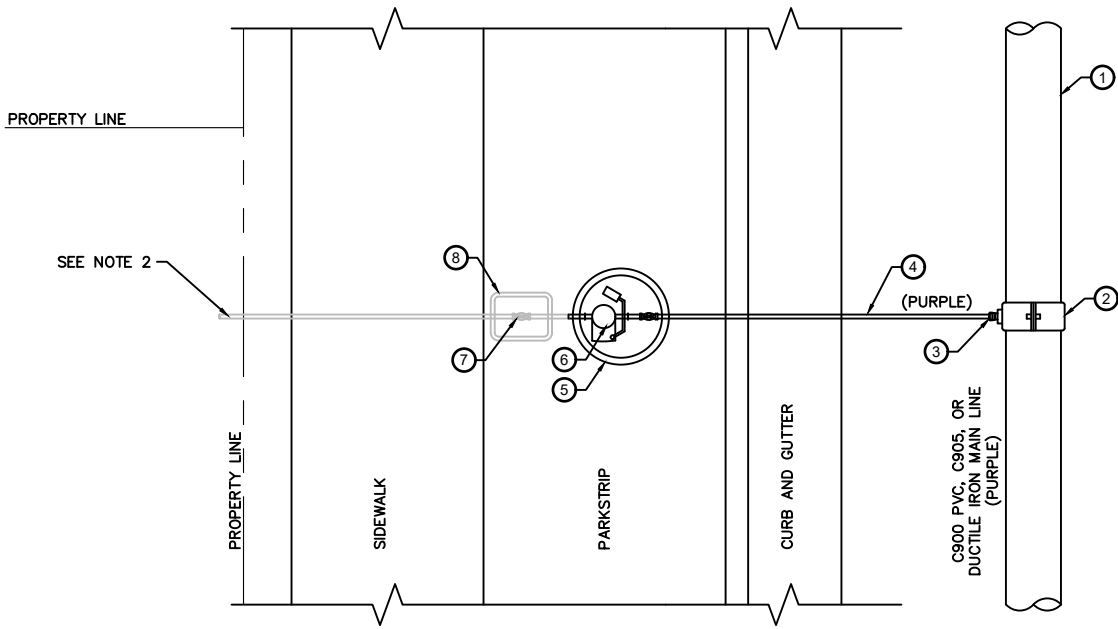
CARRIER PIPE	CASING STEEL PIPE	
DIAMETER (INCHES)	DIAMETER (INCHES)	MIN. WALL THK. W/OUT PROTECTIVE COATING
4" & UNDER	12" & UNDER	0.188"
6" & 8"	14" & 16"	0.219"
10"	18"	0.250"
12"	20"	0.281"
14"	22"	0.312"
16"	24"	0.344"
18"	26"	0.375"
20" & 21"	28" & 30"	0.406"
24"	32"	0.438"
27"	34" & 36"	0.469"
30"	38" & 40" & 42"	0.500"

SECTION A-A

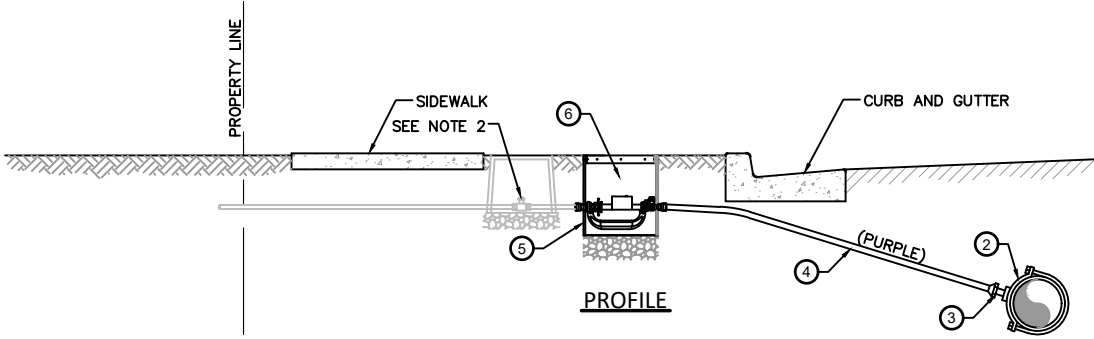
N.T.S.

PIPE CASING DETAIL

N.T.S.



SINGEL SERVICE PLAN



PROFILE

- ① MAIN LINE (PURPLE IN COLOR) 4-12" C-900 DR 14 - 12" AND LARGER C-905 OR DUCTILE IRON
- ② C-900 PVC 4-12" PIPE SIZES - INSTALL OD CONTROL SADDLE / 12" AND UP - INSTALL DOUBLE STRAP BRASS SADDLE
C-905 PVC 12" AND LARGER PIPE SIZES - INSTALL DOUBLE STRAP BRASS SADDLE
- 1" DIRECT TAP CONNECTION TO DUCTILE IRON MAIN (12" & LARGER) - 1" CORPORATION STOPS SHALL BE USED TO CONNECT TO MAIN. ALL CORPORATION STOPS SHALL BE BRASS ALLOY MUELLER 1500 SERIES OR FORD #F1000-Q W/ CTS COMPRESSION OUTLET.
- 2" DIRECT TAP CONNECTION TO DUCTILE IRON MAIN (12" & LARGER) - 2" SERVICE SADDLE REQUIRED. DOUBLE STRAP BRONZE MUELLER SERIES #BR2B OR BRASS FORD #202B.
- ③ 1" COMPRESSION FITTING - MUELLER H-15428
- ④ 1" CTS POLY (PURPLE IN COLOR) - NOTE: SLOPE FROM SERVICE BACK TO MAIN.
- ⑤ FORD METER BOX ASSEMBLY - PART# PK444-18-C17073-001-NL. HOOPER IRRIGATION.METER BOX LID POWDER COATED PURPLE FINISH - MODEL DFW18FD-AF5BT DEEP IRR HOOPER-LID W/ 2" KNOCKOUT AND KEY LOCK. INSTALL MIN. OF 6" OF WASHED ROCK TO SUPPORT BOX AND METER. DRILL 2 3/4" HOLE IN BOTTOM OF BOX.
- ⑥ METER - NEPTUNE MACH 10 R900i (PURPLE) W/ 6' PIT ANTENNA PART# 13749-200
- ⑦ 1" MUELLER H-10284 ORISEL VALVE (TYP.)
1" BRASS ADAPTER COMPRESSION X MIPT (TYP.)
- ⑧ BROOKS 1419 SERIES UTILITY BOX WITH RELEASED STANDARD WATERWORKS PENTAGON HEAD LOCKING DEVICE. TOP OF LID TO BE LABELED "IRRIGATION". (18" DEEP)(TYP.)

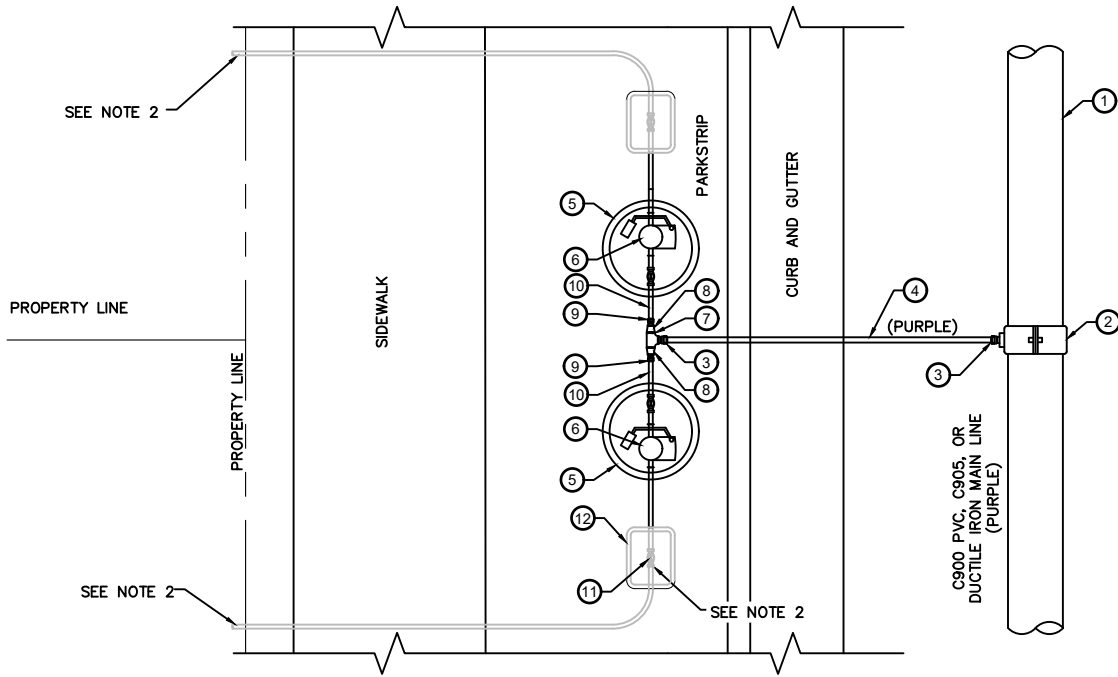
- NOTES:**
1. INSTALL TRACING WIRE ON ALL PIPE. RUN WIRE UP THE OUTSIDE OF BOTTOM OF VALVE BOX THEN THROUGH THE INSIDE OF THE TOP PORTION OF THE BOX WITH TWO FEET OF WIRE EXTENDING ABOVE FINISHED GRADE. ALL SPLICES MADE WITH WATER PROOF CONNECTIONS.
 2. HOMEOWNER IS REQUIRED TO INSTALL OWN VALVE. HOMEOWNER IS RESPONSIBLE FROM THE HOOPER IRRIGATION STOP AND WASTE VALVE TO HOMEOWNER'S PROPERTY AND REMAINING SYSTEM. HOOPER IRRIGATION REQUIRES A FILTER AFTER HOMEOWNER'S VALVE.
 3. METER TO BE INSTALLED BY HOOPER IRRIGATION. NO JUMPERS ALLOWED!!!!
 4. REFER TO HOOPER IRRIGATION WRITTEN SPECS FOR SYSTEM PRESSURE TESTING PROCEDURES.
 5. METER PIT TO BE INSPECTED BY HOOPER IRRIGATION. CONTACT SUPERVISOR SPENCER JONES
☎ 801-389-6208

Plot Date: 4/5/2023 12:12 PM Plotted By: Sam Wakeham
 J-U-B SHALL RETAIN ALL COMMON LAW, STATUTORY, COPYRIGHT AND OTHER RESERVED RIGHTS OF THESE DRAWINGS, AND THE SAME SHALL NOT BE REUSED WITHOUT J-U-B'S PRIOR WRITTEN CONSENT. ANY REUSE WITHOUT WRITTEN CONSENT BY J-U-B WILL BE AT CLIENT'S SOLE RISK AND WITHOUT LIABILITY OR LEGAL EXPOSURE TO J-U-B.

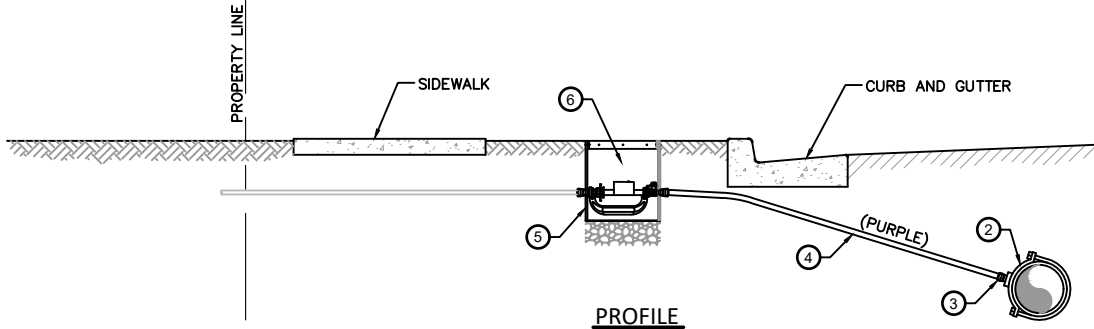
REUSE OF DRAWINGS J-U-B SHALL RETAIN ALL COMMON LAW, STATUTORY, COPYRIGHT AND OTHER RESERVED RIGHTS OF THESE DRAWINGS, AND THE SAME SHALL NOT BE REUSED WITHOUT J-U-B'S PRIOR WRITTEN CONSENT. ANY REUSE WITHOUT WRITTEN CONSENT BY J-U-B WILL BE AT CLIENT'S SOLE RISK AND WITHOUT LIABILITY OR LEGAL EXPOSURE TO J-U-B.		FILE: 55-21-134_C-501X JUB PROJ. #: 55-21-134 DRAWN BY: SLW DESIGN BY: CT CHECKED BY: CT		
NO	REVISION DESCRIPTION	BY	DATE	LAST UPDATED: 3/8/2023



HOOPER IRRIGATION COMPANY
PRESSURE IRRIGATION STANDARDS
 TYPICAL SINGLE SERVICE CONNECTION DETAIL



DOUBLE SERVICE PLAN



PROFILE

- ① MAIN LINE (PURPLE IN COLOR) 4-12" C-900 DR 14 - 12" AND LARGER C-905 OR DUCTILE IRON
- ② C-900 PVC 4-12" PIPE SIZES - INSTALL OD CONTROL SADDLE / 12" AND UP - INSTALL DOUBLE STRAP BRASS SADDLE
C-905 PVC 12" AND LARGER PIPE SIZES - INSTALL DOUBLE STRAP BRASS SADDLE
- 1" DIRECT TAP CONNECTION TO DUCTILE IRON MAIN (12" & LARGER) - 1" CORPORATION STOPS SHALL BE USED TO CONNECT TO MAIN. ALL CORPORATION STOPS SHALL BE BRASS ALLOY MUELLER 1500 SERIES OR FORD #F1000-Q W/ CTS COMPRESSION OUTLET.
- 2" DIRECT TAP CONNECTION TO DUCTILE IRON MAIN (12" & LARGER) - 2" SERVICE SADDLE REQUIRED. DOUBLE STRAP BRONZE MUELLER SERIES #BR2B OR BRASS FORD #202B.
- ③ 2" COMPRESSION FITTING - MUELLER H-15428
- ④ 2" CTS POLY (PURPLE IN COLOR) - NOTE: SLOPE FROM SERVICE BACK TO MAIN.
- ⑤ FORD METER BOX ASSEMBLY - PART# PK444-18-C17073-001-NL. HOOPER IRRIGATION. METER BOX LID POWDER COATED PURPLE FINISH - MODEL DFW18FD-AF5BT DEEP IRR HOOPER-LID W/ 2" KNOCKOUT AND KEY LOCK. INSTALL MIN. OF 6" OF WASHED ROCK TO SUPPORT BOX AND METER. DRILL 2 3/4" HOLE IN BOTTOM OF BOX.
- ⑥ METER - NEPTUNE MACH 10 R900i (PURPLE) W/ 6' PIT ANTENNA PART# 13749-200
- ⑦ 2" FIP THREAD BRASS TEE
- ⑧ 2" x 1" BRASS BUSHING
- ⑨ 1" COMPRESSION FITTING H-15428
- ⑩ 1" x 8" CTS POLY
- ⑪ 1" MUELLER H-10284 ORISEL STOP AND WASTE VALVE (TYP.) W/ 1" BRASS ADAPTER COMPRESSION X MIPT (TYP.)
- ⑫ BROOKS 1419 SERIES UTILITY BOX WITH RELEASED STANDARD WATERWORKS PENTAGON HEAD LOCKING DEVICE. TOP OF LID TO BE LABELED "IRRIGATION". (18" DEEP)(TYP.)

NOTES:

- 1. INSTALL TRACING WIRE ON ALL PIPE. RUN WIRE UP THE OUTSIDE OF BOTTOM OF VALVE BOX THEN THROUGH THE INSIDE OF THE TOP PORTION OF THE BOX WITH TWO FEET OF WIRE EXTENDING ABOVE FINISHED GRADE. ALL SPLICES MADE WITH WATER PROOF CONNECTIONS.
- 2. HOMEOWNER IS REQUIRED TO INSTALL OWN VALVE. HOMEOWNER IS RESPONSIBLE FROM THE HOOPER IRRIGATION STOP AND WASTE VALVE TO HOMEOWNER'S PROPERTY AND REMAINING SYSTEM. HOOPER IRRIGATION REQUIRES A FILTER AFTER HOMEOWNER'S VALVE.
- 3. METER TO BE INSTALLED BY HOOPER IRRIGATION. NO JUMPERS ALLOWED!!!!
- 4. REFER TO HOOPER IRRIGATION WRITTEN SPECS FOR SYSTEM PRESSURE TESTING PROCEDURES.
- 5. METER PIT TO BE INSPECTED BY HOOPER IRRIGATION. CONTACT SUPERVISOR SPENCER JONES ☎ 801-389-6208

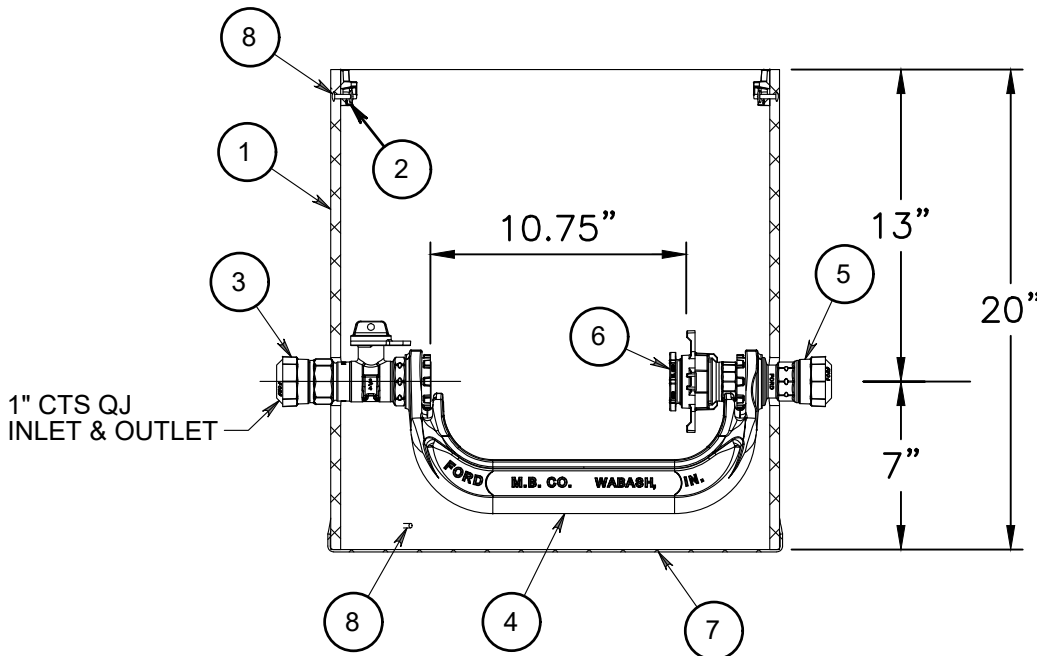
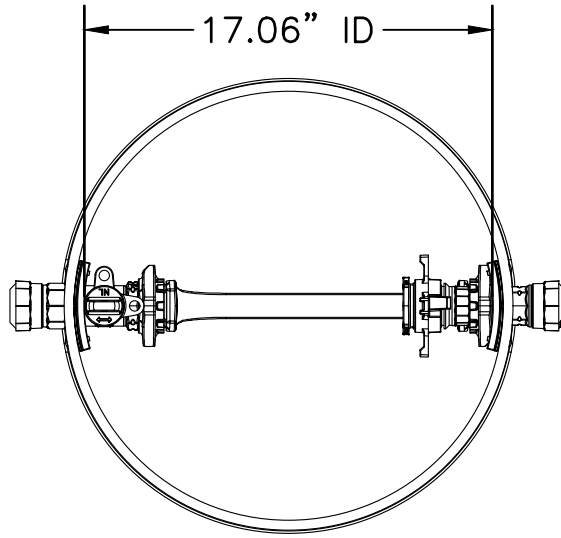
Plot Date: 4/5/2023 12:12 PM Plotted By: Sam Wakeham
 Date Created: 3/29/2023 \\\UB.COM\CENTRAL\CLIENTS\UT\HOOPER\IRRIGATION\PROJECTS\55-21-134 - HOOPER\IRRIGATION\PROJECTS\55-21-134 - C-501X.DWG

REUSE OF DRAWINGS			
NO	REVISION DESCRIPTION	BY	DATE

FILE: 55-21-134 - C-501X
JUB PROJ. #: 55-21-134
DRAWN BY: SLW
DESIGN BY: CT
CHECKED BY: CT
LAST UPDATED: 3/8/2023



HOOPER IRRIGATION COMPANY
PRESSURE IRRIGATION STANDARDS
 TYPICAL DOUBLE SERVICE CONNECTION DETAIL



NOTE:
ADD (3) 1/4" DRILLED HOLES FOR DRAINAGE

ITEM NO.	DESCRIPTION	QTY.	MATERIAL	CATALOG NUMBER
1	18" TILE (.360 WALL)	1	PVC	
2	LID LOCKING BRACKET	2	PLASTIC	
3	BALL VALVE	1	CAST NO-LEAD BRASS	B94-344WR-5-68-Q-NL
4	YOKE BAR	1	CAST GRAY IRON	Y504
5	OUTLET, ASSY	1	CAST NO-LEAD BRASS	C94-44-Q-NL
6	EXPANSION CONNECTION	1	CAST NO-LEAD BRASS	EC-4-NL
7	BOTTOM PLATE	1	ABS (BLACK)	
8	RIVET	8	ALUMINUM	
9	WASHER	4	ZINC PLATED STEEL	

Plot Date: 4/5/2023 12:12 PM Plotted By: Sam Wakeham
 Date Created: 3/8/2023 \JUB.COM\CENTRAL\CLIENTS\UT\HOOPER\IRRIGATION\PROJECTS\55-21-134 HOOPER\RR\WATERMETER\INSTALLATION\PROJECT\DWG\CAD\SHETS\55-21-134_C-501X.DWG

REUSE OF DRAWINGS
 J-U-B SHALL RETAIN ALL COMMON LAW, STATUTORY, COPYRIGHT AND OTHER RESERVED RIGHTS OF THESE DRAWINGS, AND THE SAME SHALL NOT BE REUSED WITHOUT J-U-B'S PRIOR WRITTEN CONSENT. ANY REUSE WITHOUT WRITTEN CONSENT BY J-U-B WILL BE AT CLIENT'S SOLE RISK AND WITHOUT LIABILITY OR LEGAL EXPOSURE TO J-U-B.

FILE: 55-21-134_C-501X
 JUB PROJ. #: 55-21-134
 DRAWN BY: SLW
 DESIGN BY: CT
 CHECKED BY: CT
 LAST UPDATED: 3/8/2023



HOOPER IRRIGATION COMPANY
PRESSURE IRRIGATION STANDARDS
 PIP SETTER DETAIL

SHEET
PI-20

NO.	REVISION DESCRIPTION	BY	APR	DATE